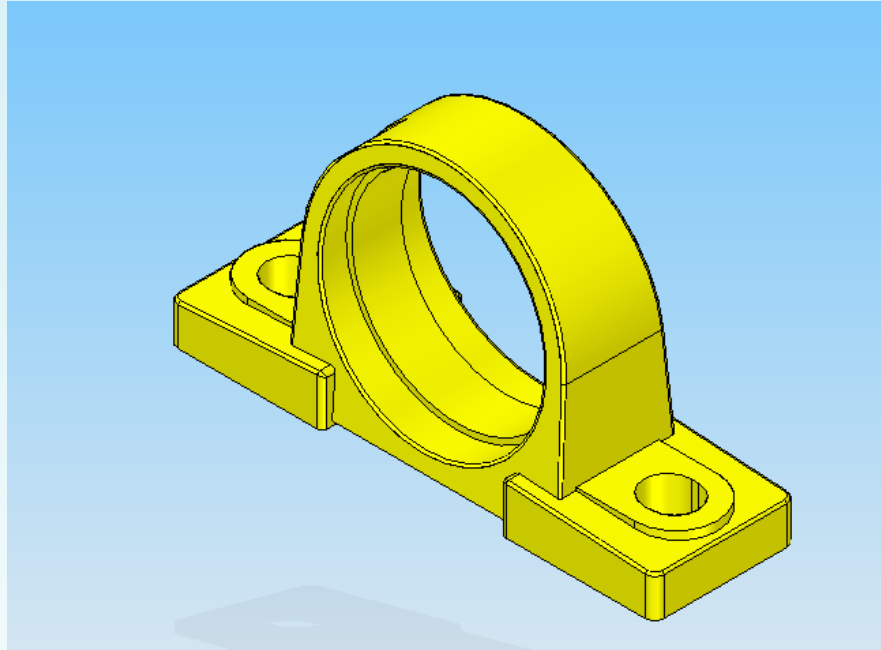


# P Seat Pillow Block Housing Processing Line



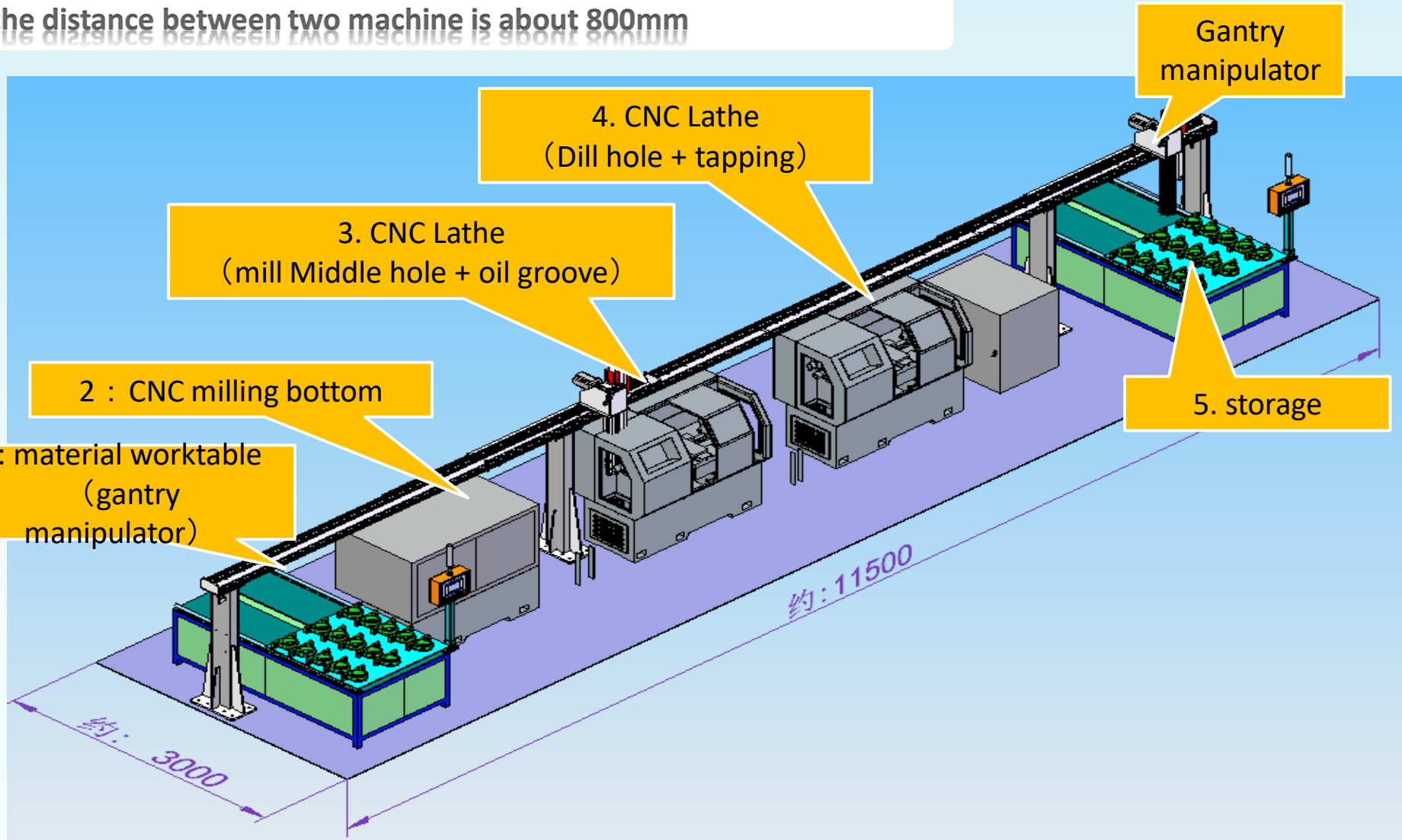
## Requirement:

- 1) This equipment adopts one machine produce the P type Seat for one size from available sizes P201 to P218, and the working hours required for each product are about 60s;
- 2) All processing procedures are shown in the drawing on the following page;
- 3) The product meets the client inspection standard after completion

# Description

layout of whole production line

the distance between two machine is about 800mm

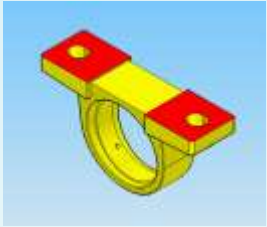


dimension unit into drawing is mm

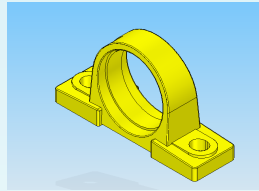
# Description

## Layout

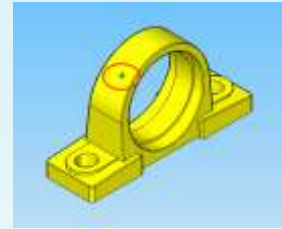
Manual loading automatic arrangement waiting to grab



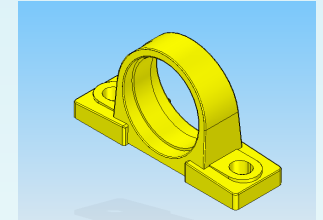
Step 1:  
milling bottom side



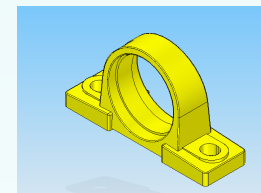
2 : processing oil  
Groove +middle hole



3 : drill oil hole+  
oil hole tapping



4 : fine processing  
ball surface

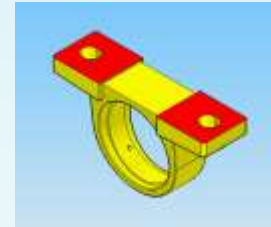
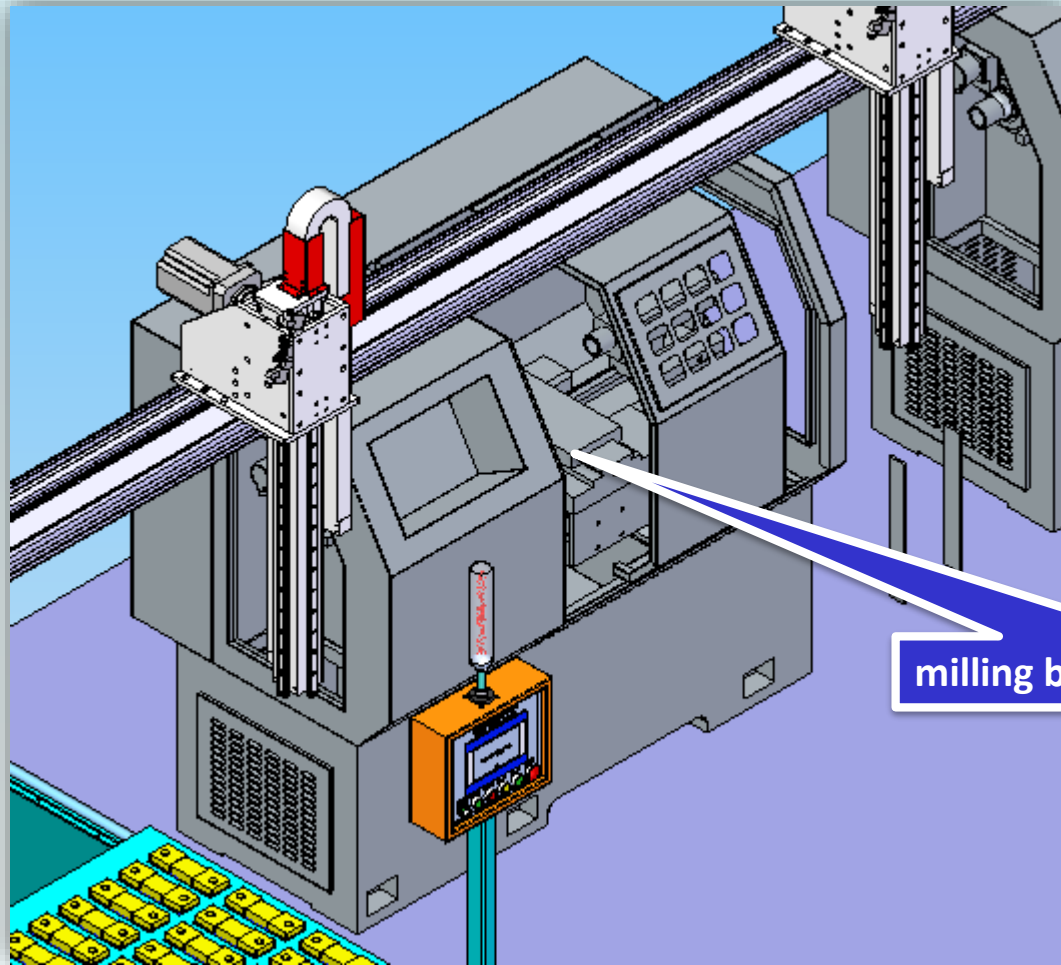


Discharge by gantry robot



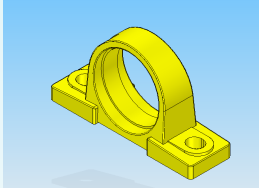
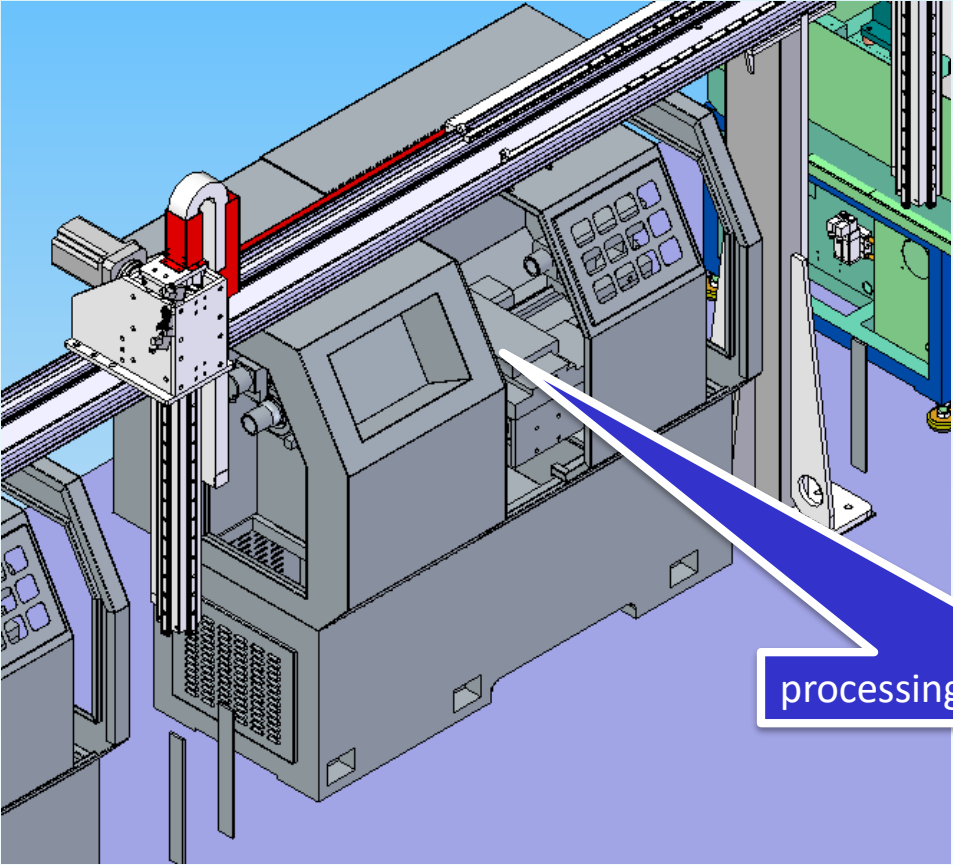
design working efficiency 70s,  
estimate processing capacity 60pcs/H

## Processing 1 : Milling bottom side



milling bottom side

## Processing 2 : processing oil tank + cylinder hole

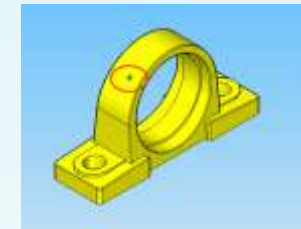
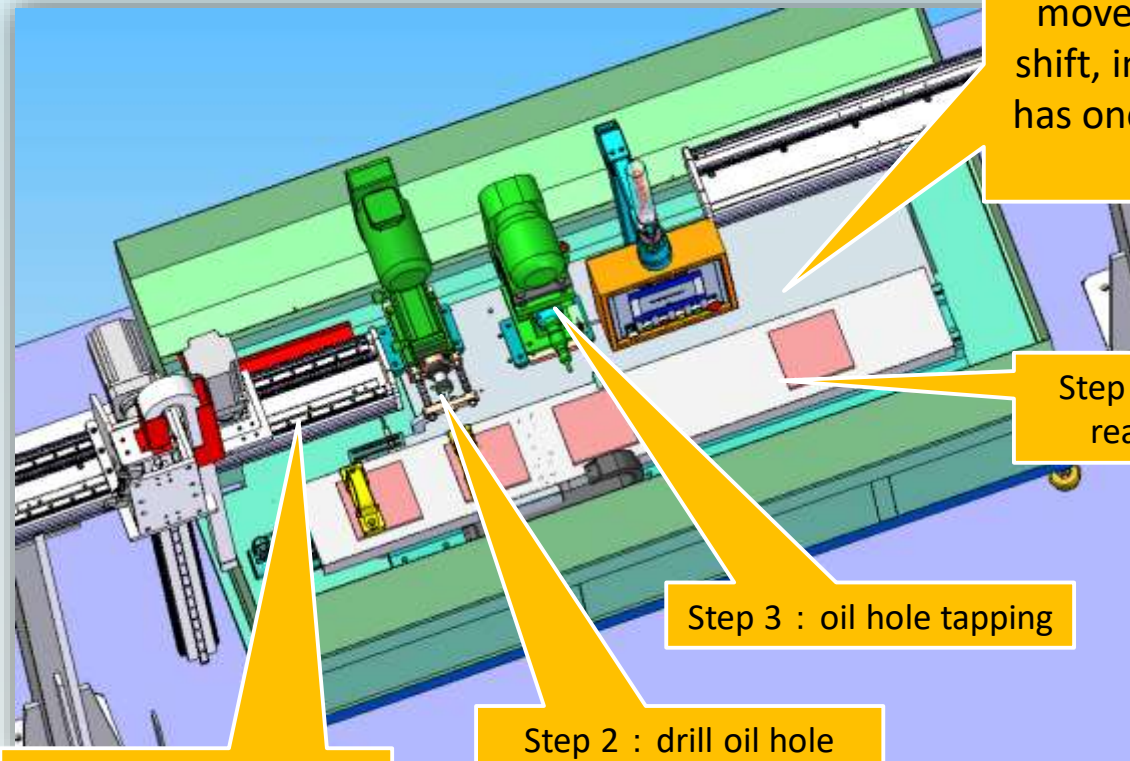


processing oil tank + cylinder hole

# Decription

## Processing 3 : drill oil hole+oil hole tapping

These blocks just indicate that there is a working bit, the movement is by the module shift, in fact, this machine only has one set of fixtures and one product



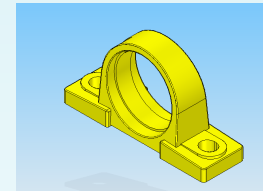
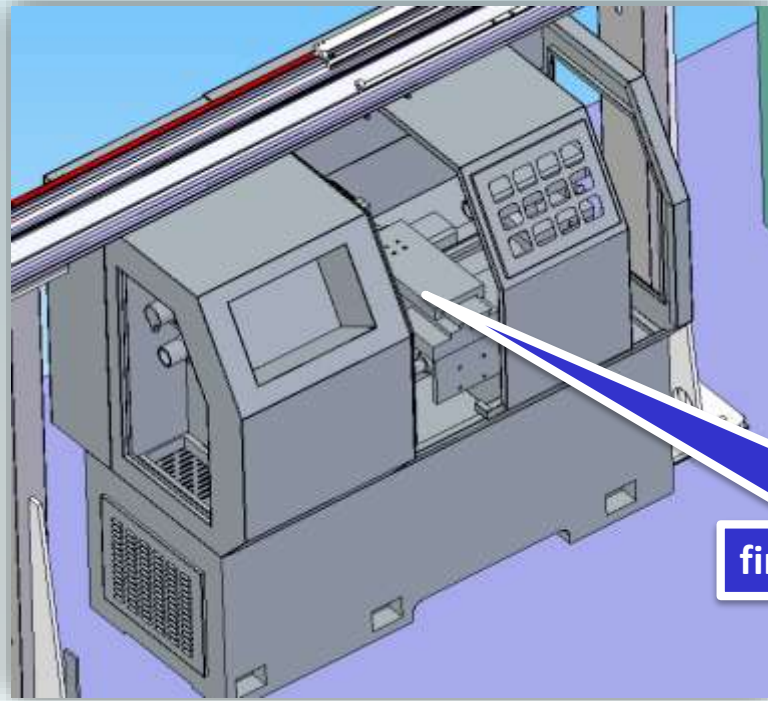
Step 1: loading material in front of machine

Step 2 : drill oil hole bottom hole

Step 3 : oil hole tapping

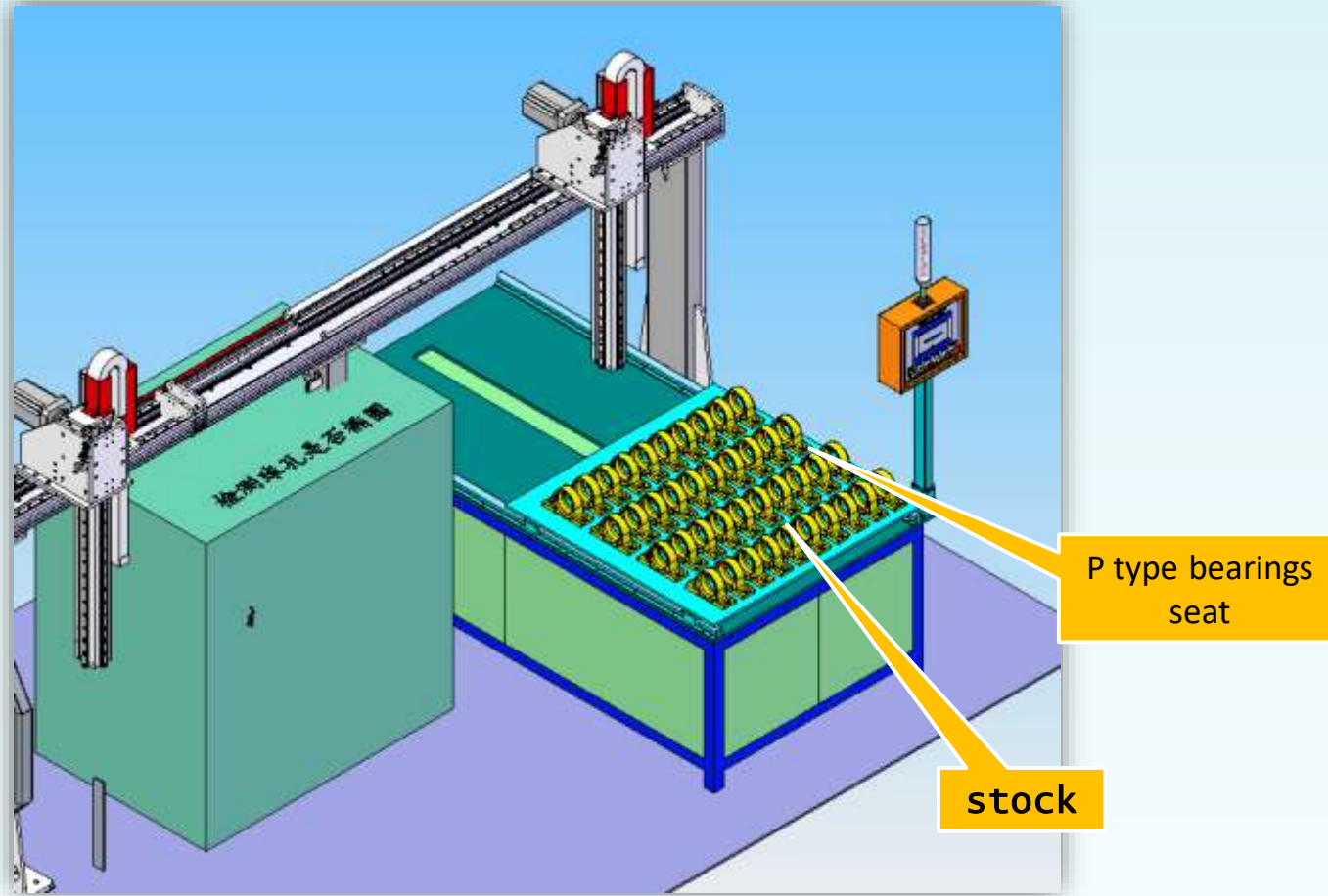
Step 4: unloading at rear of machine

## Processing 4 : fine processing ball surface



fine processing ball surface







# Others

- Working area required: 11500\*3000mm
- Manpower required: 1-2 worker/ line  
if multi production lines, 2 workers will care 3 lines.
- Working efficiency: 15000pcs/month per line
- Delivery date: 60 working days (since final the machine design plan and got deposit from buyer)

# Installation and Training

- Warrantee period: 12 month against the date of BL.
- Installation and training: the seller will send engineer go to buyer factory to install and debugging the machine onsite.
- buyer will bear all cost for engineer during this period. the details cost include:
  - 1). Visa charge for engineer, normal need 3 engineers
  - 2). Round air ticket from China to buyer factory.
  - 3). Room, food and daily commutation charges from hotel to buyer factory.
  - 4). Estimate installation and training period is 25-30 days.
  - 5). All cost will pay to seller's account in advance by T/T.